



D & C

MILANO

ISOLA



photo: Laila Pozzo
www.lailapozzo.com

ISOLA

THE COLLECTION ISOLA IS COMPOSED OF GEOMETRIC FIGURES WITH A PLAY ON PROPORTION. THE PRIMARY TEXTURES AND STRUCTURES, USING NATURAL TONES, CREATE A HARMONIOUS ENVIRONMENT THAT ALLOW TRANSITION BETWEEN THE INDOOR AND OUTDOOR SPACE. THE FIRST GROUP OF FABRICS, DEVELOPED FOR EXTERIORS, IS CHARACTERISED BY SMALL GEOMETRIC PATTERNS. THESE FABRICS HAVE NEUTRAL TONES INCORPORATING BLACK HIGHLIGHTS WHICH CONTRAST TO THE VIVID NATURAL COLOURS OF THE OUTDOOR ENVIRONMENT. THE SECOND GROUP OF FABRICS, DEVELOPED FOR INTERIOR USE, BALANCE THOSE FOR OUTDOOR. THESE ARE CHARACTERISED BY A SUBTLE ELEGANCE THAT YOU CAN FIND IN OUR NEW RANGE OF LINENS, WOOLS, SILKS AND EMBROIDERIES. WOOL IS THE DOMINANT FABRIC IN THIS COLLECTION, REINVENTED TO SIT NATURALLY WITHIN THE URBAN LANDSCAPE, NO LONGER ASSOCIATED ONLY WITH ITS MOUNTAINOUS ORIGIN. WE HAVE PROCESSED OUR SILK TO EMPHASISE ITS NATURAL STATE AND CELEBRATE THE INHERENT TEXTURE IN ITS RAW FORM. EXPANDING THE HOME COLLECTION C&C MILANO PROPOSE THE USE OF LINENS AND WOOLS, ADDING NEW MATELASSÉ EFFECT COTTONS WITH EMBROIDERED DETAILS THAT MIRROR THOSE OF THE ARTISANS.



1

2

3

1. YOKO 2. ORIGAMI 3. MIDORI 4. SAKURA 5. SAMURAI



4

5

(right)

Black/ivory outdoor cushion in YOKO, *black/ivory* outdoor cushion ORIGAMI and outdoor fabric *black/ivory* SAMURAI.

(this page)

Ivory/orange outdoor striped fabric RAMEN, *natural/black* outdoor fabric MIDORI.





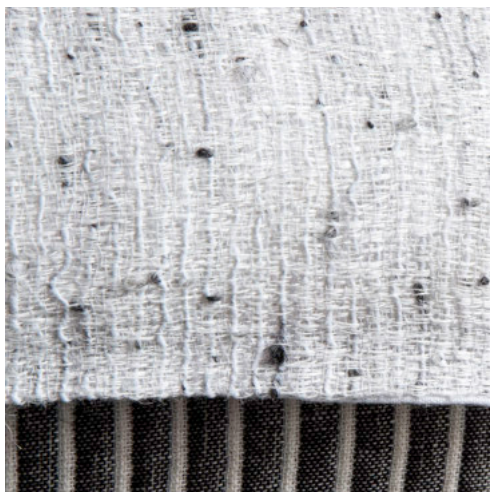


(left)

Black/ivory bed cover and pillowcases in ATLANTE, *ivory/grey* cushion in CARMENCITA and *beige* blended Alpaca throw BAGATELLE. cm 140x200 (inch 55x78)

(this page)

Ash duvet cover in SATIRO and *black/ivory* bed cover in ATLANTE.



(right)

1. *Ivory* cushion in SANTIAGO, 2. *ivory/natural* bench in PERÙ, 3. *ivory/natural* cushion in SARAPO.

(this page)

Ivory/natural and *clay* cushion in SARAPO AND PELLINO, *ivory* cushion in SANTIAGO AND VOLTERRA.





1

2

3



(left)

Coconut/ivory silk striped cushion in EDEN, *natural* cushion in PARNASO. *Ivory/beige* wool and alpaca striped cushion in CARMENCITA.

(this page)

Ivory/natural cotton and linen fabric MONTEVIDEO, *natural/black* outdoor fabric GINKO and *ivory/black* striped fabric LIMA.





1

2

3

(left)

1. *Jute* silk fabric PANTHEON, 2. *coconut/ivory* striped silk EDEN, 3. *coconut* silk PANGEA.

(this page)

White/black blended linen fabric SOLIMANA,
natural silk effect fabric PARNASO.

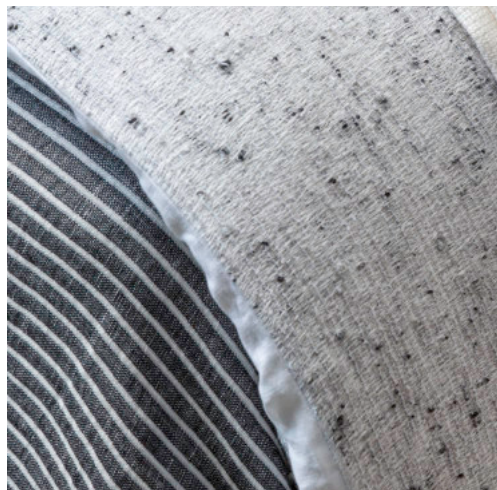
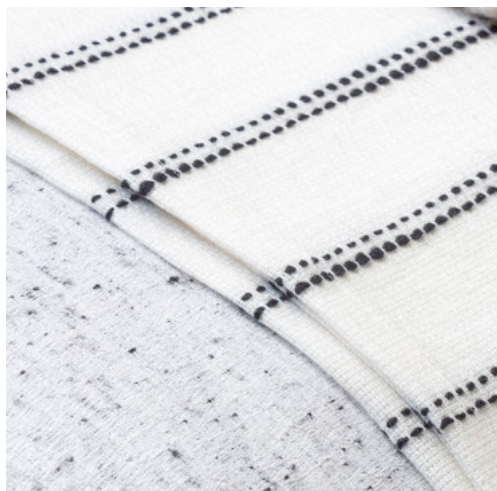


(right)

Ivory/orange wool and linen bed spread in MORGANA TRES.

(this page)

Ivory/black wool and linen fabric MORGANA DUO. *White* cashmere blanket with 'salto' stitching BONET cm 240x220 (inch 94x86).





(right)

Natural linen embroidered cushion in PIGALLE,
beige blended alpaca throw BAGATELLE
cm 140x200 (inch 55x78).

(this page)

Cream wool embroidered cushion in
TEMPESTINE, *off white* linen embroidered
cushion in NAVETTE.





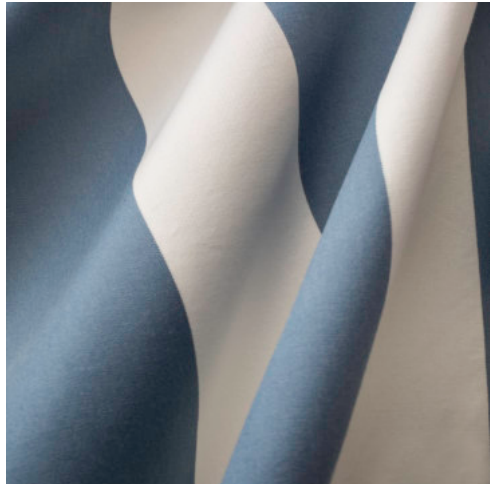
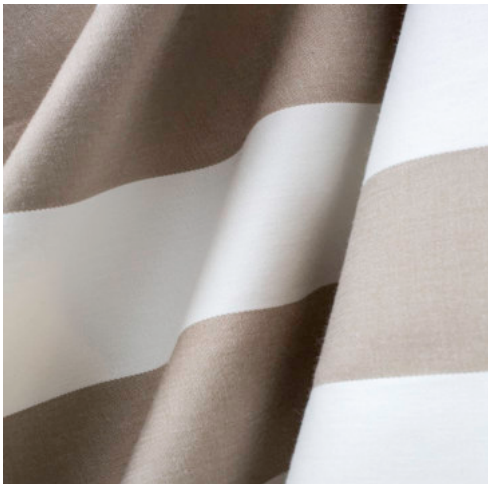


(left)

*Dust, strawberry, mustard yellow, carrot, pistachio
and lake striped cotton fabric CARIOCA.*

(this page)

*Pumpkin, avio, turtle dove striped cotton fabric
CARIOCA.*





1. CARAMBOLA 2. BAGATELLE 3. MACHIAVELLI

HOME DÉCOR

SOFT, RICH AND DELICATE IN TASTE, THESE HOME ACCESSORIES HAVE A SIMPLE YET MODERN APPEAL FOR ANY SPACE. C&C MILANO CONTINUES THE COLLABORATION WITH SAN PATRIGNANO TO CREATE UNIQUE CASHMERE THROWS AND BLANKETS, ADDING FOUR NEW MODELS. EVERY PIECE HAS BEEN DESIGNED AND HAND WOVEN ESPECIALLY FOR C&C MILANO.

UNIQUE AND HAND-MADE: THESE ARE THE MAIN FEATURES THAT MAKE C&C MILANO HOME ACCESSORIES STAND OUT IN THE DECORATION LANDSCAPE. IT'S NOW POSSIBLE TO GIVE YOUR BED AND TABLE A CLASSIC STILL MODERN LOOK AND ADD A PERSONAL TOUCH TO THE LINEN OR COTTON SETS WITH THE DANCE COLLECTION. THE NEW FOUR HAND EMBROIDERED STYLES REPRESENT A MOVE TOWARDS A CONTEMPORARY HOME EMBELLISHMENT WHILE MAINTAINING A VALUED APPROACH TO LUXURY.



(right)

White/beige wool ombre throw NIAGARA
cm 140x180 (inch 55x71).

(this page)

Beigelindigo wool ombre throw CARAMBOLA
cm 140x180 (inch 55x71), *beige* net throw
in alpaca MACHIAVELLI cm 140x200 (inch
55x78).





DANCE COLLECTION

(right)

Beige hand embroidered napkin with applied border RUMBA, *beige* hand embroidered napkin MAMBO.

(this page)

Hand embroidered napkins 1. TANGO, 2. RUMBA, 3. MAMBO, 4. POLKA.





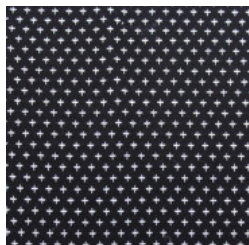
ISOLA COLLECTION fabrics

208858

Yoko

100% polypropylene
135 cm / 53.15 "

black/ivory

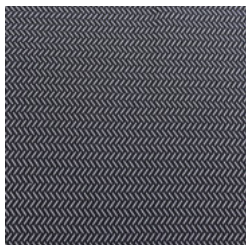


208856

Origami

100% polypropylene
135 cm / 53.15 "

black/ivory

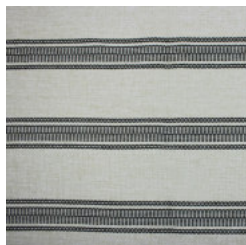


208855

Midori

100% polypropylene
135 cm / 53.15 "

natural/black

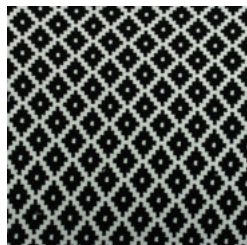


208859

Samurai

100% polypropylene
135 cm / 53.15 "

black/ivory

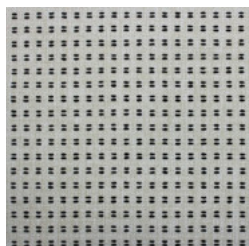


208857

Ginko

100% polypropylene
135 cm / 53.15 "

natural/black



208853

Ramen

100% polypropylene
135 cm / 53.15 "

beige/orange



208854

Sakura

100% polypropylene
135 cm / 53.15 "

white/beige

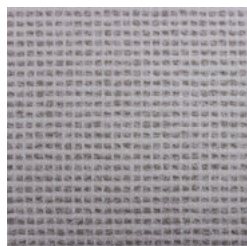


208850

Santiago

100%
130 cm / 51.18 "

ivory



208848

Perù

40% LI 31% WO 29% TR
140 cm / 55.12 "

ivory/natural



208852

Sarapo

59% LI 31% CV 10%PM
145 cm / 57.09"

ivory/natural



208847

Montevideo

51% CO 39% LI 10% CV
135 cm / 53.15 "

ivory/natural

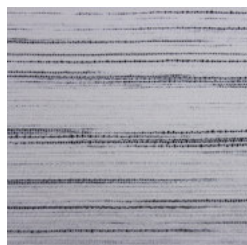


208849

Lima

50% LI 40% CO 10% TR
135 cm / 53.15 "

ivory/black



208851
Solimana
32%LI 8% WO 60% TR
140 cm / 55.12 “
white/black



208653
Parnaso
100% PL
140 cm / 55.12 “
natural



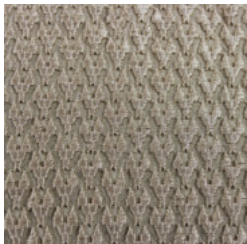
208651
Eden
100% SE
140 cm / 55.12 “
coconut/ivory



209375
Tempestine
100% WO
150 cm / 59.06 “
cream



209371
Pigalle
100% LI
150 cm / 59.06 “
natural



209370
Navette
100% LI
140 cm / 55.12 “
off white



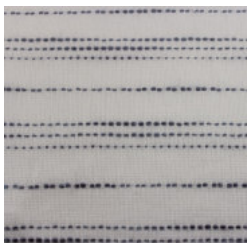
209355
Carmencita
30% CO 21% WO 49% TR
140 cm / 55.12 “
ivory/grey



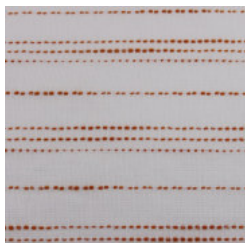
209356
Carmencita
30% CO 21% WO 49% TR
140 cm / 55.12 “
ivory/beige



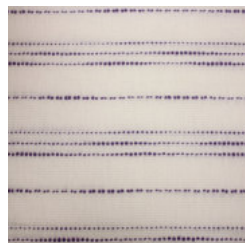
208870
Morgana Tres
53% WO 47% LI
285 cm / 112.20 “
ivory/avio



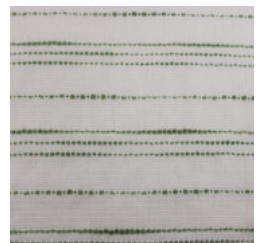
208871
Morgana Tres
53% WO 47% LI
285 cm / 112.20 “
ivory/orange



208872
Morgana Tres
53% WO 47% LI
285 cm / 112.20 “
ivory/lilac



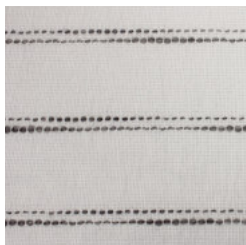
208873
Morgana Tres
53% WO 47% LI
285 cm / 112.20 “
ivory/ivy



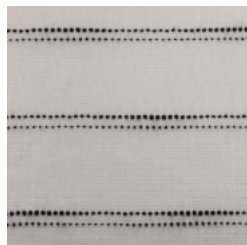
208867
Morgana Duo
53% WO 47% LI
285 cm / 112.20 “
ivory/beige



208868
Morgana Duo
53% WO 47% LI
285 cm / 112.20 “
ivory/grey



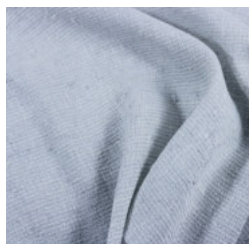
208869
Morgana Duo
53% WO 47% LI
285 cm / 112.20 “
ivory/black



208866
Satiro
52% LI 24% WO 24% TR
290 cm / 114.17 “
oat



208865
Satiro
52% LI 24% WO 24% TR
290 cm / 114.17 “
dust



208864
Satiro
52% LI 24% WO 24% TR
290 cm / 114.17 “
ash



208874
Atlante
50% LI 50% CO
290 cm / 114.17 “
beige/ivory



208875
Atlante
50% LI 50% CO
290 cm / 114.17 “
grey/ivory



208876
Atlante
50% LI 50% CO
290 cm / 114.17 “
aquamarine/ivory



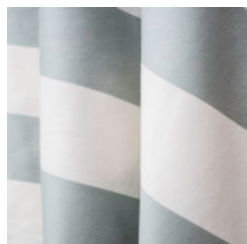
208877
Atlante
50% LI 50% CO
290 cm / 114.17 “
brick/ivory



208878
Atlante
50% LI 50% CO
290 cm / 114.17 “
black/ivory



209425
Carioca
80% CO 20% NY
140 cm / 55.12 “
dust

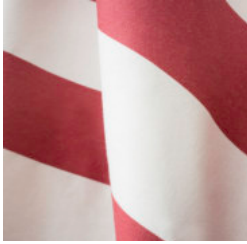


209429

Carioca

80% CO 20% NY
140 cm / 55.12 "

strawberry



209423

Carioca

80% CO 20% NY
140 cm / 55.12 "

mustard

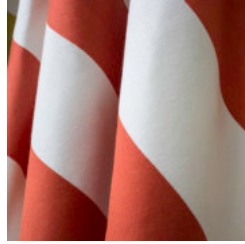


209428

Carioca

80% CO 20% NY
140 cm / 55.12 "

carrot

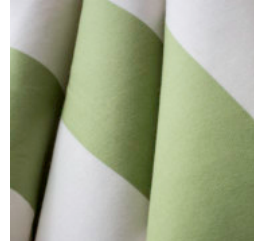


209430

Carioca

80% CO 20% NY
140 cm / 55.12 "

pistachio



209420

Carioca

80% CO 20% NY
140 cm / 55.12 "

lake



209424

Carioca

80% CO 20% NY
140 cm / 55.12 "

pumpkin



209422

Carioca

80% CO 20% NY
140 cm / 55.12 "

turtle dove

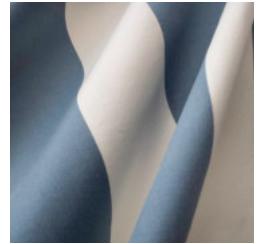


209427

Carioca

80% CO 20% NY
140 cm / 55.12 "

avio

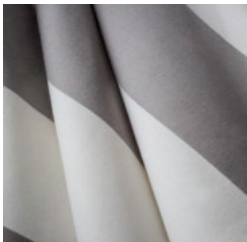


209421

Carioca

80% CO 20% NY
140 cm / 55.12 "

metal

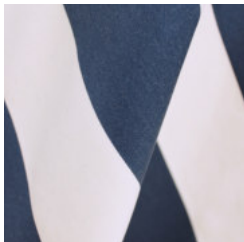


209426

Carioca

80% CO 20% NY
140 cm / 55.12 "

ultramarine





HONG KONG
LONDON
MILANO
MÜNCHEN
NEW YORK
PARIS

Via Zenale, 3 - 20123 Milano, Italy

T. +39 02 48015069

e-mail: office@cec-milano.com

www-cee-milano.com